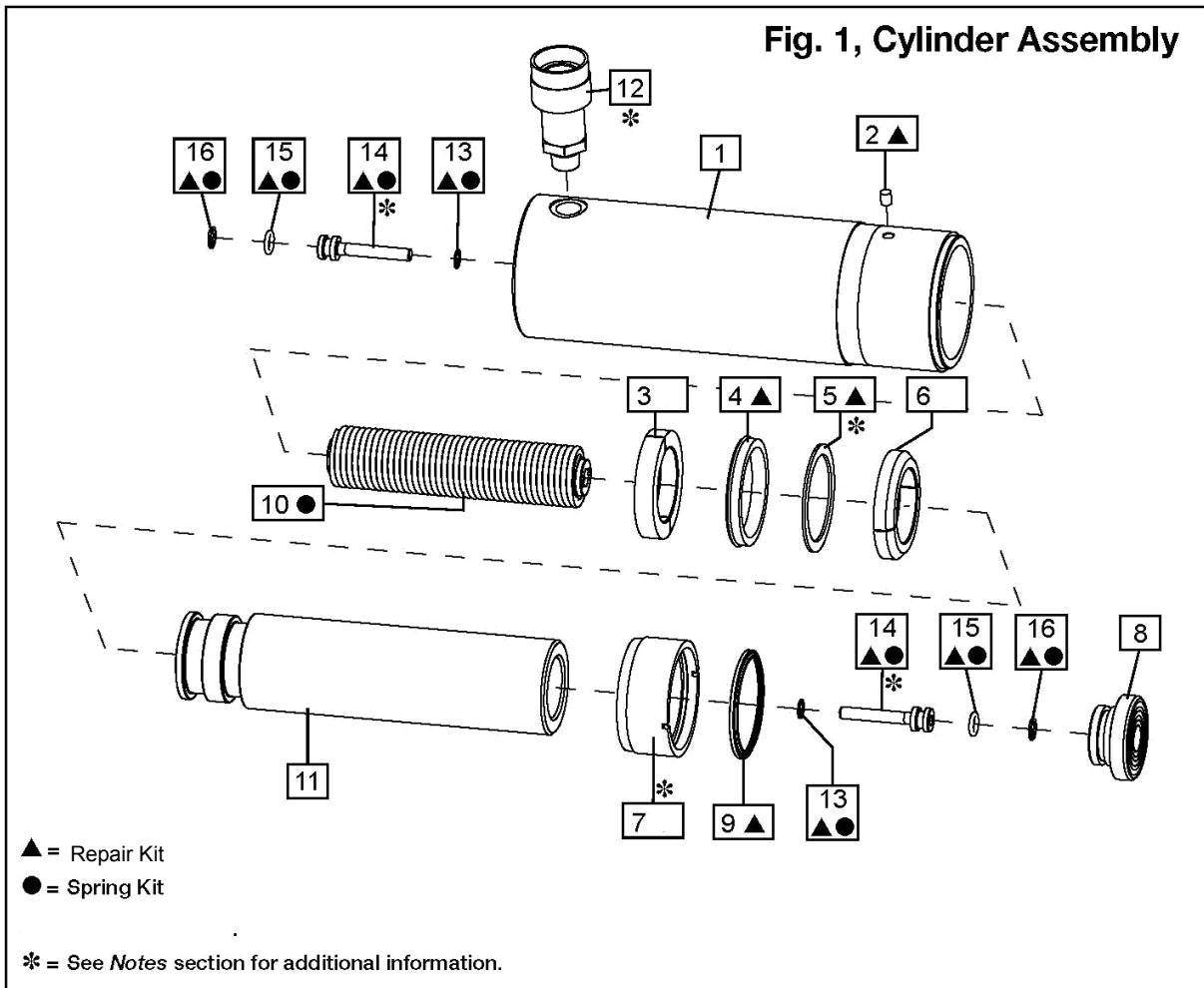




INSTRUCTION MANUAL

Parts List For Cylinder, 25 Ton, 6" Stroke Model 13100



**Note: See Page 2
for parts list.**

(*) Notes	
Item	Torque / notes
5	Washer to be placed with the sharp edge towards U-Cup.
7	7.9 - 10.2 Nm, 70 - 90 In - Lbs
7	Secure with Loctite 222.
12	54 - 81 Nm, 40 - 60 Ft - Lbs
12	Use Loctite 545 or Teflon tape.
14	10.2 - 12.4 Nm, 90 - 110 In - Lbs



INSTRUCTION MANUAL

Parts List For Cylinder, 25 Ton, 6" Stroke Model 13100

Item	Part Number	Description	Qty.
1	13100-001	Cylinder Body	1
2	13100-002 (▲)	Filter	1
3	13100-003	Bearing, Bottom	1
4	13100-004 (▲)	U-Cup	1
5	13100-017 (▲)	Washer	1
6	13100-006	Bearing, Top	1
7	13100-007	Stop Ring	1
8	13100-008	Saddle, Grooved	1
9	13100-009 (▲)	Wiper Ring	1
10	13100-010 (●)	Spring	1
11	13100-011	Piston	1
12	16060	Coupler	1
13	13100-013 (▲●)	Gasket	2
14	13100-014 (▲●)	Spring Retainer	2
15	13100-015 (▲●)	O-Ring	2
16	13100-016 (▲●)	Back-Up	2
▲	13100 RK	Repair Kit	-
●	13100 SK	Spring Kit	-
Notes: Repair Kit includes all repair kit items (▲). Spring Kit includes all (●)			